

# No Sew Fleece Blanket

## You will need:

Polar Fleece: 1½ yard piece or choose your own custom size. (Fleece is usually 50-60" wide)

"Ruler or Shape Cut Ruler and Rotary Cutter": Works best to create neatly cut fringe. If you are using scissors, make sure your cuts are clean, even and straight with no frayed edges.

This blanket is simply made in 5 easy steps.

**Step #1:** Before you begin, trim off selvage edges and square uneven edges as needed. (Fig. 1)

**Step 2:** (Fig. 2)

Cut a 4" square from each corner of the fleece.

Cut 4" x 1" wide fringe around blanket

**Step #3:** (Fig. 3)



Figure 1

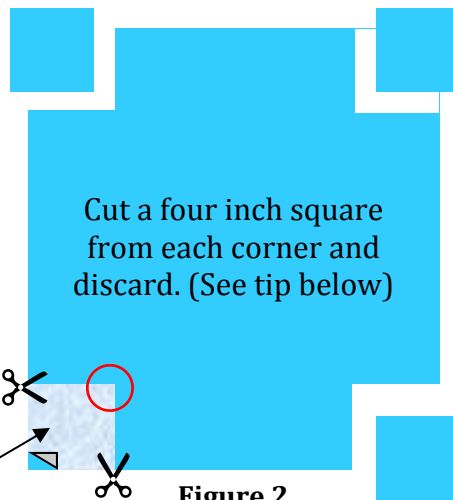


Figure 2

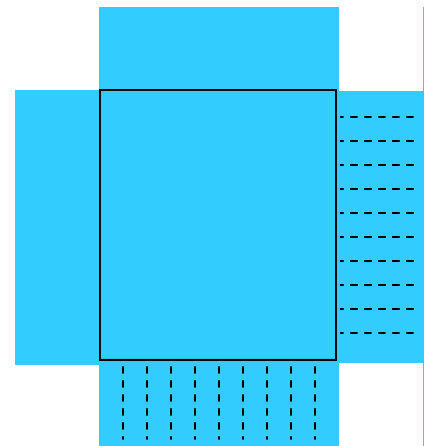
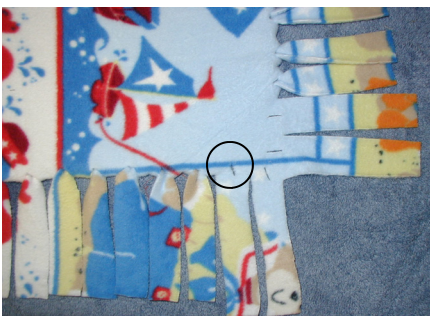
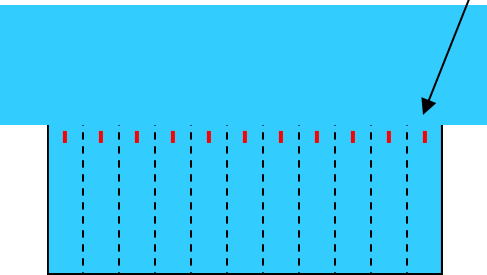


Figure 3

*Tip: Cut a 4" piece of fabric or batting to use as your corner template. (Fig. 2) It won't slip and it will make cutting easier. Using your ruler and rotary cutter cut vertically and horizontally—(arrows) ALMOST to the corner (red circle) but NOT QUITE. Then use your scissors to finish the corner cut. This will give you a crisp, clean cut and you won't cut into the neighboring fringe. NOTE: Fringe may be cut in 1/2" or 1" increments.*

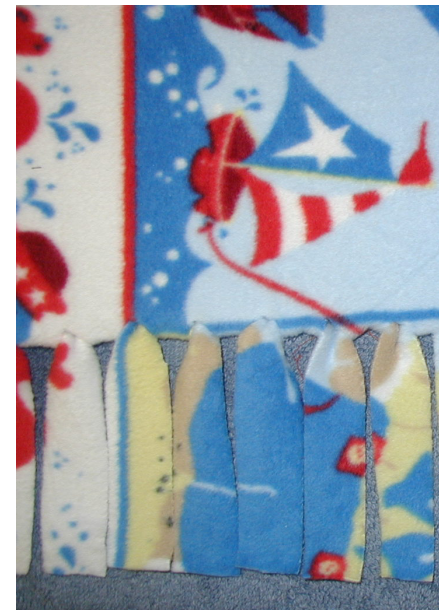
**Step #4:**

Using a seam ripper, make a tiny slit in the top of each piece of fringe



**Step #5:** Feed the end of the fringe through the back side of

the slit you just cut and pull through to create a neat and secure fringed edge.



Visit us at:  
[www.projectlinus.org](http://www.projectlinus.org)